

PART II B.SC. (GEN) PRACTICAL EXAMINATION. 2021

SUBJECT – BOTG

PAPER 3

FULL MARKS – 100(BOTH MODULES)

Q1. Draw and describe the reproductive structures of *Chara*. Mention the indentifying features of *Chara*.

(3+2)+4+2=11

Q2. Draw, describe any of the following plant. Identify the family with reasons. Draw the floral diagram. Give the floral formula.

(4+3)+5+4+2+2=20



A



B

Q3. Identify the following specimens.

3x3=9



A



B



C

4. Mention the scientific name and family of the following plants.

2.5x4=10



A



B



C



D

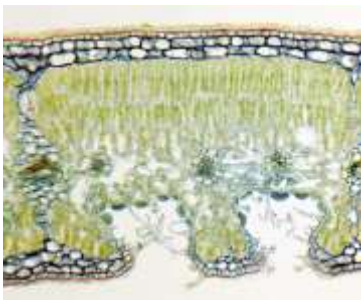
5. Draw label and mention the identifying features of any one of the following. (5+5)+5=15

- A) Dicot stem
- B) Monocot root
- C) Xerophytic leaf

6. Draw the experimental set up, Mention the requisition, Describe the procedure of any one of the following experiments. 5+5+5=15

- a) Demonstrate the production of CO₂ by aerobic respiration in a Respiroscope.
- b) Demonstrate the production of O₂ by Photosynthesis of *Hydrilla* sp plant.

7. Identify the following Specimens with reason. (1.5x1) x2=5



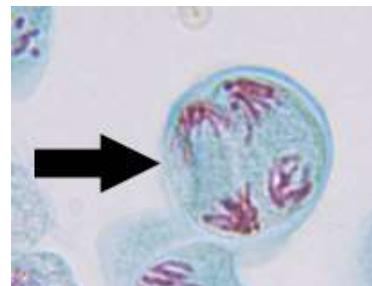
8. Draw and identify the following. (1+1+2+1)x3=15



a



b



c